

SMB CONNECTOR SPECIFICATIONS

FEATURES :

- Snap-on / quick disconnect mating
- Low cost solution
- Available in 50Ω and mini 75Ω

APPLICATIONS :

- Base Stations
- Automotive
- Test and Measurement
- PC / LAN
- Cable Assemblies
- Wireless Network Antennas
- Video System

ELECTRICAL SPECIFICATIONS

<u>Impedance</u>	50 Ω / mini 75 Ω
<u>Frequency Range</u>	0 – 4 GHz / 0 – 2 GHz
<u>Working Voltage</u>	≥ 250 VRMS
<u>Dielectric Withstanding Voltage</u>	1000 VRMS at sea level
<u>VSWR</u>	Straight : 1.3 max Right Angle : 1.5 max
<u>Contact Resistance</u>	Center Contact : ≤ 6 mΩ Outer Contact : ≤ 1 mΩ
<u>Insulation Resistance</u>	5000 MΩ min.

MATERIAL SPECIFICATIONS

<u>Body and outer contacts</u>	Brass, nickel or gold plated
<u>Male contact</u>	Brass, gold plated
<u>Female contact</u>	Beryllium Copper, gold plated
<u>Insulator</u>	PTFE
<u>Crimp ferrule</u>	Copper or brass, nickel or gold plated

MECHANICAL SPECIFICATIONS

<u>Contact Retention</u>	≥ 4 lbs
<u>Engagement Force</u>	≤ 14 lbs
<u>Disengagement Force</u>	≥ 1.8 lbs
<u>Durability (matings)</u>	500 cycles min.

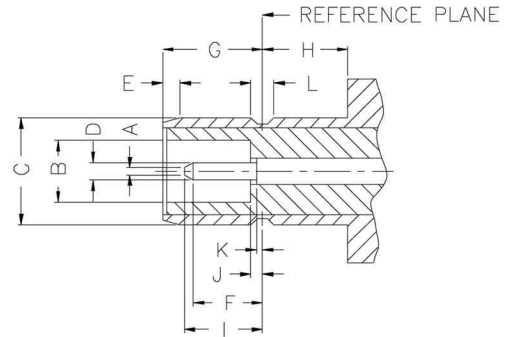
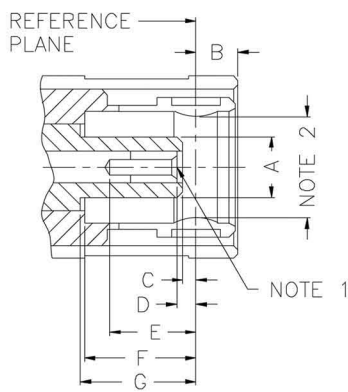
ENVIRONMENTAL

<u>Compliant with the requirements for RoHS Directive 2001/65/eu issued June 8, 2011</u>	
<u>Temperature Range</u>	-65°C to +165°C

SMB MATING DIMENSIONS

INTERFACE MATING DIMENSIONS

50Ω



PLUG		
Letter	Millimeters	
	Minimum	Maximum
A	2.00	2.06
B	-	1.62
C	0.18	-
D	0.18	0.94
E	2.97	-
F	3.58	-
G	3.58	-

JACK		
Letter	Millimeters	
	Minimum	Maximum
A	-	0.25
B	2.08	2.16
C	3.66	3.71
D	0.48	0.53
E	0.00	-
F	1.32	-
G	3.33	3.58
H	2.03	-
I	-	2.97
J	-	0.18
K	-	0.18
L	0.69	0.94

Note 1 : I.D. to meet VSWR and contact resistance when mated with 0.48/0.53 mm dia. pin.

Note 2 : Must meet the force to engage and disengage when mated with mating part.

MINI 75Ω

